

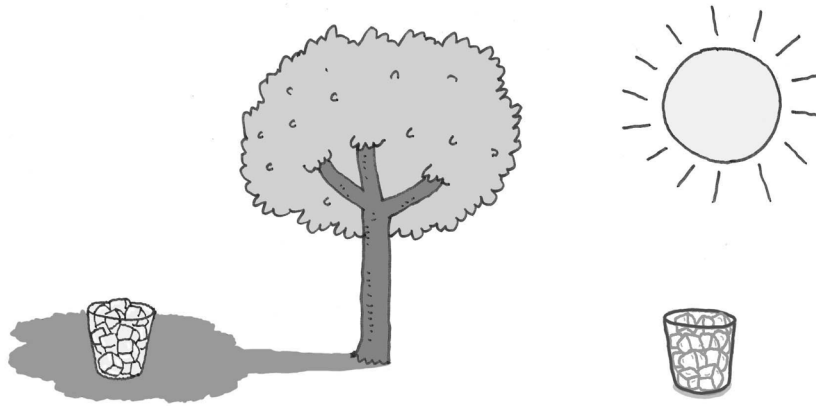
Cups of Ice

Weather Conditions Cluster (Lessons 1-5)

TEACHER NOTES:

Use this assessment after teaching Lesson 5.

You might have children point to the correct picture and orally respond to the questions that follow.



Directions:

1. Look at the picture above.
2. Circle the cup of ice you think will change the most in half an hour.

Children should circle the cup of ice in the sun.

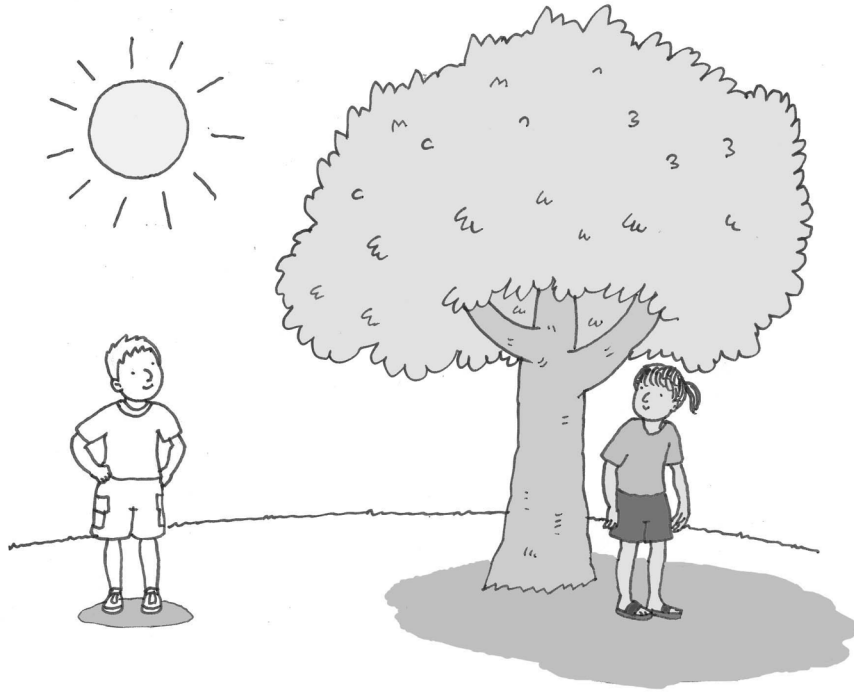
3. How do you think the ice will change?

Children should indicate that the ice will melt or start to melt.

4. Why do you think the cup you circled will change the most?

When evaluating children's responses, consider whether they demonstrate an understanding that the sun warms the ice, causing the ice to melt.

Use this picture to answer question 5.



5. (Lesson 5) Who is standing in the warmer spot?

- a. the girl
- b. *the boy*